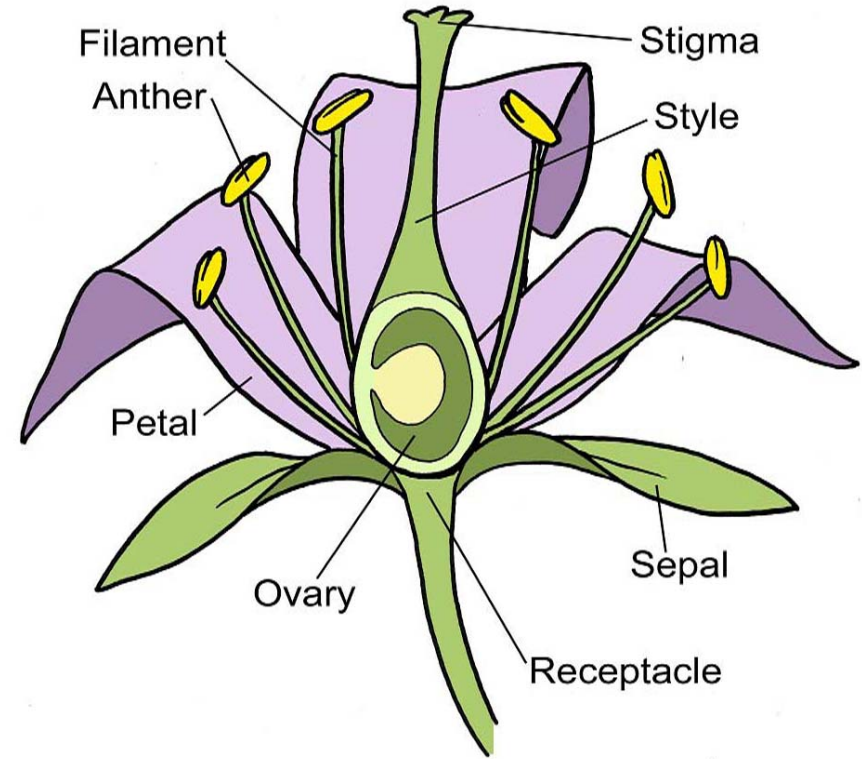
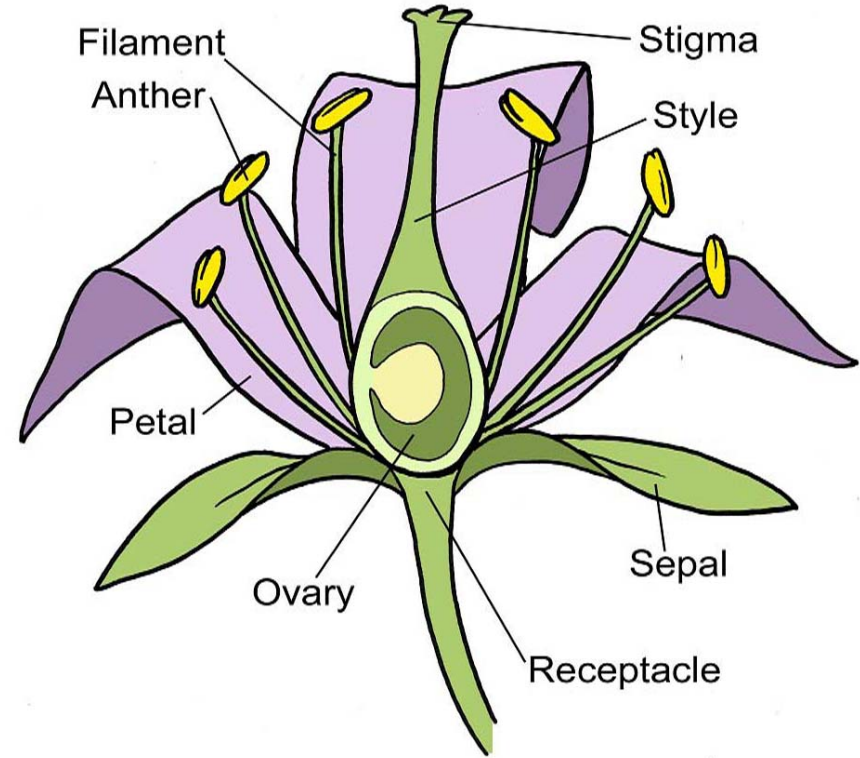


Activity idea!

Parts of a flower



- Draw/craft your own flower
- Look at different plants and try to find the different flower parts
 - What things are **the same**?
 - What things are **different**?
 - Are any parts **hard to find**?



Filament + Anther = Stamen
Stigma + Style + Ovary = Carpel

Activity idea!

Find the habitat



- Look around your front and back yards
 - Can you find **food, shelter, water and space** for wildlife?
 - Can you find any **native plants**?



Activity Idea!

Life in the city



- Take a walk around your neighborhood and look for **signs of life**
 - Birds and insects
 - Plants growing in sidewalk cracks
 - Moss or ivy growing on buildings
 - Empty lots or community gardens



Activity Idea!

Use your senses



- What plants and animals do you **see**?
- What things can you **smell**?
- What do the leaves and trees **feel** like?
- Can you **hear** birds?
- What can you **taste**?
Be careful!



- **Video chat with friends**
- **Take photos, share and collect**



Fun apps to use



Map of Life



Project Noah



Seek by iNaturalist



Merlin Bird ID by Cornell Lab



PlantSnap